

PowerExcel

INSTALLATION GUIDE



This page has been left blank intentionally.



POWEREXCEL INSTALLATION GUIDE

T o p i c s

- Pre-Requisites
- PowerExcel Installation
 - Register the Product
 - Create a Connection

Information in this document and in documents associated with other PARIS Technologies Training materials is subject to change without notice and does not represent a commitment on the part of PARIS Technologies. No part of this manual may be reproduced or transmitted in any form, or by any means whatsoever, without the written permission of PARIS Technologies International, Inc.

© Copyright 2020 PARIS Technologies International, Inc.

Windows is a trademark of the Microsoft Corporation.

Microsoft Excel is a trademark of the Microsoft Development Corporation.



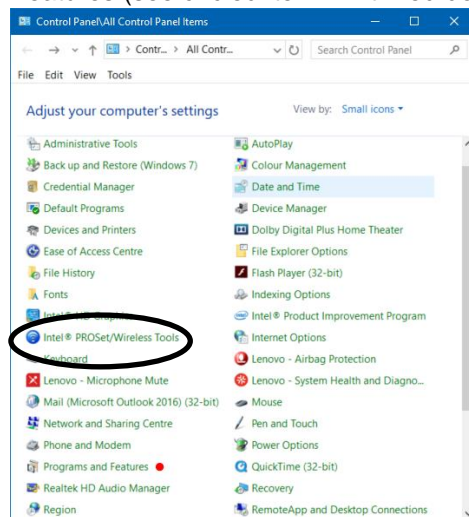
1. Pre-Requisites

In order for PowerExcel to work, these applications must be installed properly on your machine:

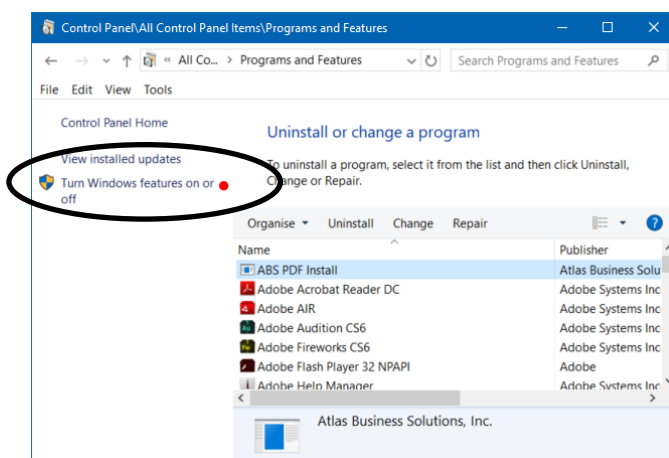
- **Microsoft Excel 2016 or higher**
[NOTE: you must be an Administrator on your machine to proceed with installation]
- **.Net Framework 3.5**

[NOTE: the following PARIS Tech web page provides these same instructions that follow:
<https://web.paristech.com/dotnet-installer>]

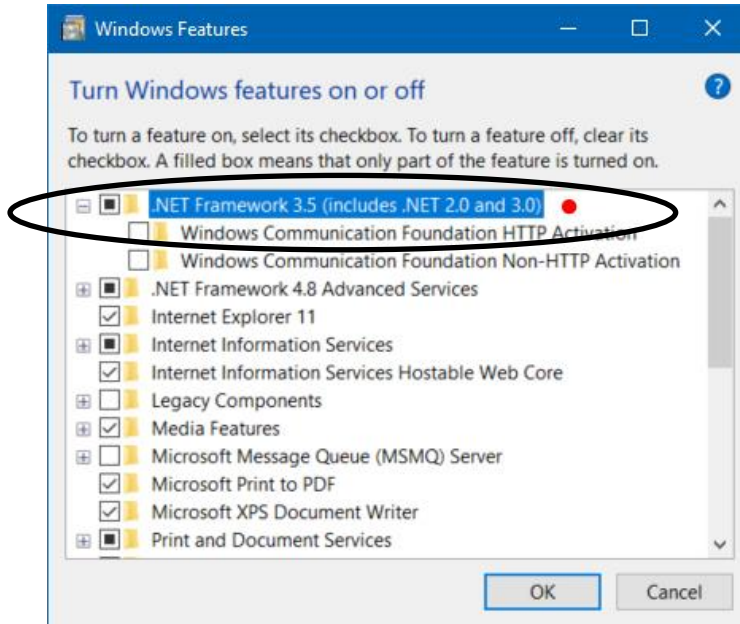
To verify that .Net Framework 3.5 is installed, open Control Panel and go to Programs and Features (see circled item—with red dot—in below image)



Select “Turn Windows features on or off” (see circled item—with red dot—in below image):



.Net Framework 3.5 should be in the Windows Features list (see circled item—with red dot—in below image)



If it does not appear, instructions for download and install follow:

Download .Net 3.5: <https://dotnet.microsoft.com/download/dotnet-framework/net35-sp1>

[See next page for **PowerExcel Installation**]

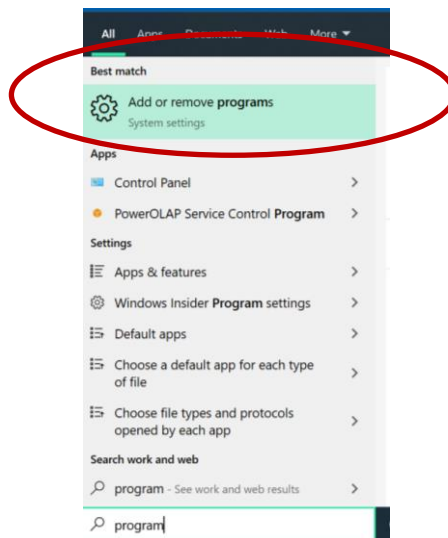
2. PowerExcel Uninstall – to do before Update

[If you are doing a “fresh” install, please proceed to Section 3]

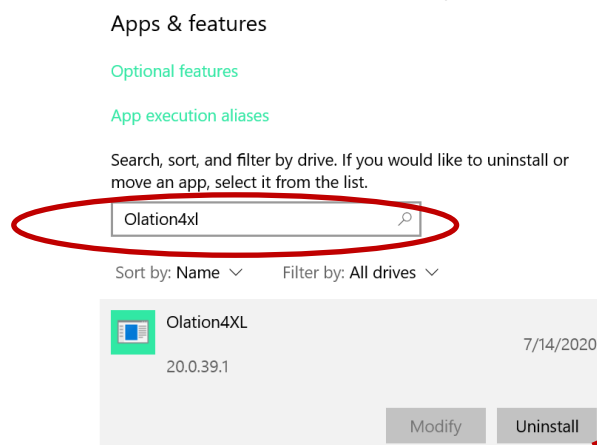
It is necessary to Uninstall PowerExcel in order to upgrade to a new version. The procedure is quite simple. You may see slightly different images from the ones shown below, depending on your version of Windows, but the procedure is the same: you will Uninstall both the previously installed components, **Olotion4XL** and **PowerExcel**. (Note that this uninstalls must be done in that order.)

NOTE: please close Excel before following these Uninstall steps.

1. You can type “programs” into Windows Search to get to the **Add or remove programs** section (circled in following image).

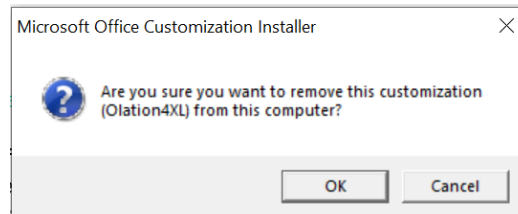


2. Under Apps & features, search for **Olotion4XL** (circled in the below image).

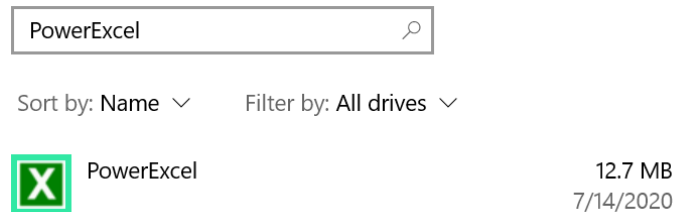


3. Click on **Uninstall**—see arrow above.

4. You will see a pop-up stating: This app and its related info will be uninstalled. Once again, click **Uninstall**.
5. The following window will appear—click **OK** to proceed.



6. Next in Apps & features, search for **PowerExcel**, as below.



7. Proceed to Uninstall as you did above (with Olation4XL). (You may see an Installer screen showing the uninstall in process.)

At this point, with the Uninstall completed, you may proceed to Install PowerExcel:

1. Download the PowerExcel install file provided by PARIS Technologies
2. Unzip the PowerExcel install file
3. Run as Admin (right click)
4. Open Excel
5. Run the Olation4XL.vsto install that appears

NOTE: Unless otherwise instructed, you will not have to re-license PowerExcel: thus, after installation, you will not need to proceed to Section 4 for product Registration, as your licensing will still exist after an upgrade. Likewise, any Connections you have made (discussed in Section 5) will exist (i.e., will not need to be re-made) after an upgrade.

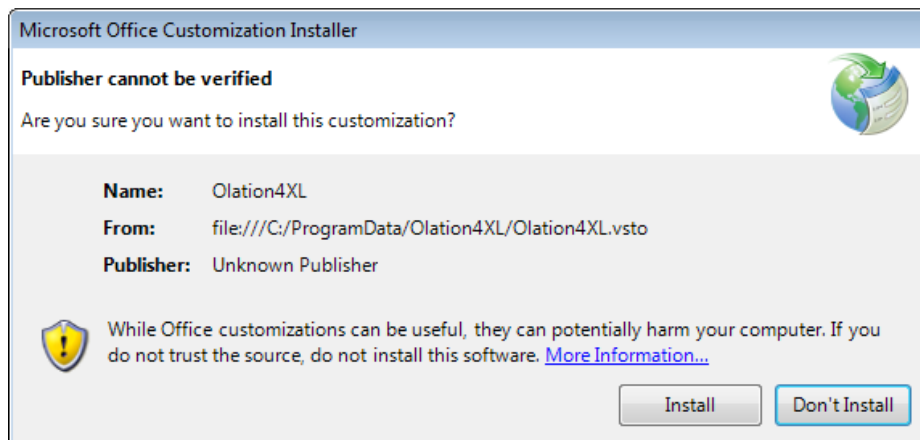
3. PowerExcel Installation

NOTE: [PARIS Technologies](#) will provide you with a download of the setup file for PowerExcel

3.1 Install PowerExcel

To install PowerExcel:

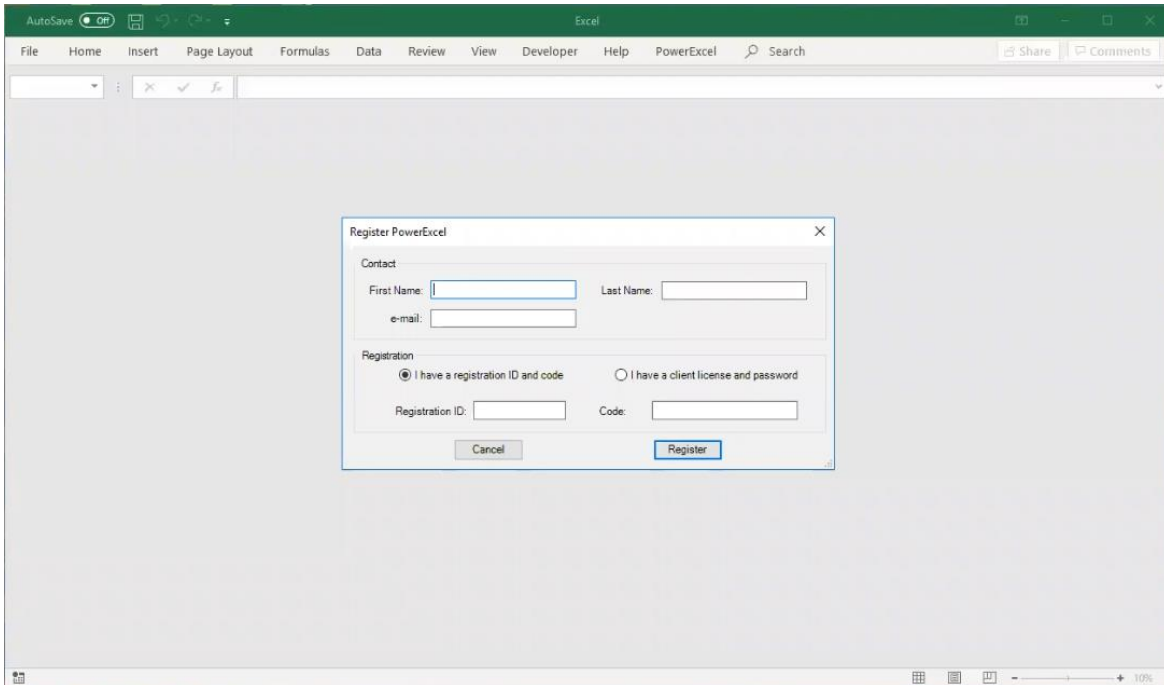
1. Locate and run the PowerExcel Installation file (Setup.exe).
(If the setup.exe is in a zip/RAR file, extract to a preferred location, like your Desktop.)
IMPORTANT: YOU MUST run the setup.exe as an Administrator. To do this, right-click on the **setup.exe** installation file and select the **Run as Administrator** option. This initializes the PowerExcel InstallShield Wizard.
2. To continue with the installation, click **Next**.
3. The **License Agreement** and **Maintenance Agreement** screens appear next. **Accept** the agreements and click **Next**.
4. In the subsequent screen, select **Install** to initiate the installation process.
5. Once the installation has successfully completed, click on the **Finish** button to exit the wizard.
6. Open Excel. The following screen will appear—click **Install**.



[See next page to **Register PowerExcel**!]

4. Register PowerExcel

To register the PowerExcel license: following the install on the previous page and when you first launch Excel, you will see the **Register PowerExcel** dialog, as below.

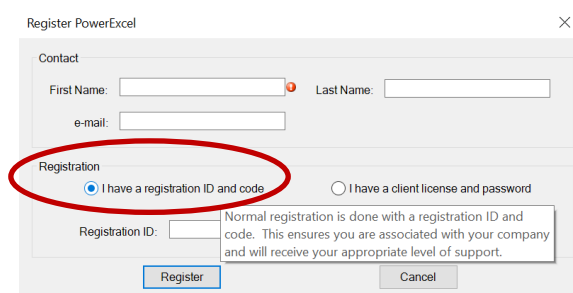


The two methods for Registration/licensing are discussed as follows:

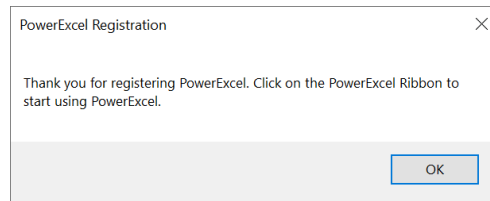
(1) Left-hand radio button:

- ***I have a registration ID and code*** (see below image, circled).

In this case, you will have received a registration ID and code—after filling in your First Name, Last Name and email, keep the left-hand radio button checked (as below); enter them into the Registration ID and Code boxes (note that the Code box is hidden in the below image, under the text box pop-up).



Click **Register** – the following PowerExcel Registration confirmation window will appear:



Click **OK** – you will be taken to the standard Excel File → New screen.

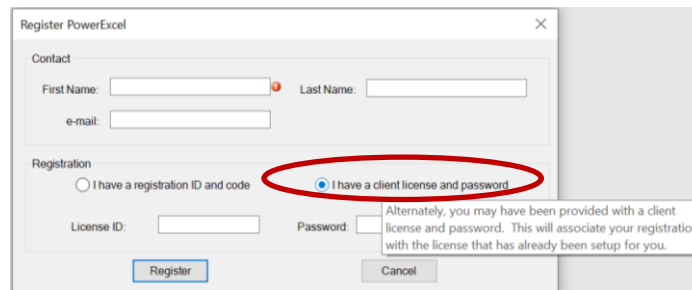
You can proceed to use PowerExcel.

[**Note:** on the PowerExcel Ribbon, when you click on the About PowerExcel icon, you will see a License ID different from the Registration ID or Code you used earlier. This is as it should be. In any case, reference this License ID when using PowerExcel Support.]

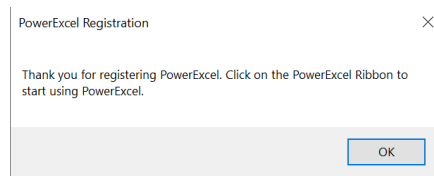
(2) Right-hand radio button:

- ***I have a client license and password*** (see below image, circled).

In this case, you will have received a License ID and Password—after filling in your First Name, Last Name and email, keep the right-hand radio button checked (as below), enter them into the License ID and Password boxes (note that the Password box is partially obscured in the below image, under the text box pop-up).



Click **Register** – the following PowerExcel Registration confirmation window will appear:



You can proceed to use PowerExcel.

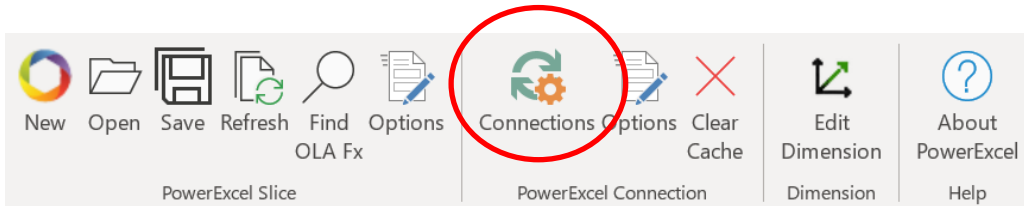
[**Note:** on the PowerExcel Ribbon, when you click on the About PowerExcel icon, you will see your License ID. Reference this License ID when using PowerExcel Support.]

5. Create a Connection

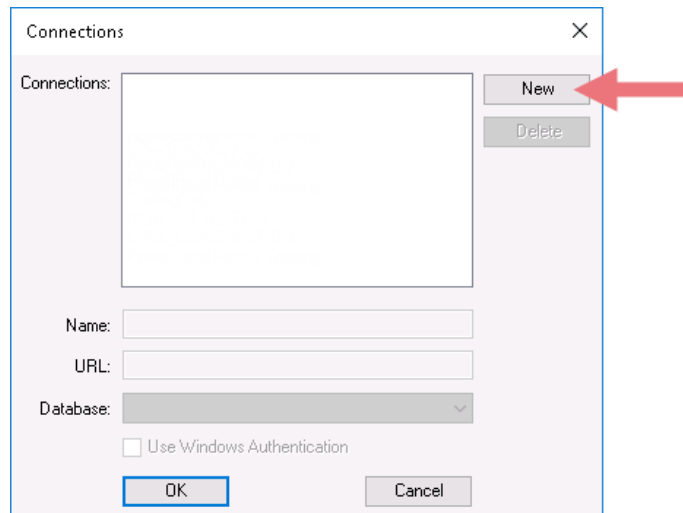
1. Click **OK** to close the dialog box.
2. **Restart Excel** and click on **Blank workbook**.
3. The **PowerExcel tab** will appear (circled in red below).



4. Click on **PowerExcel** and its **ribbon** will appear, as below



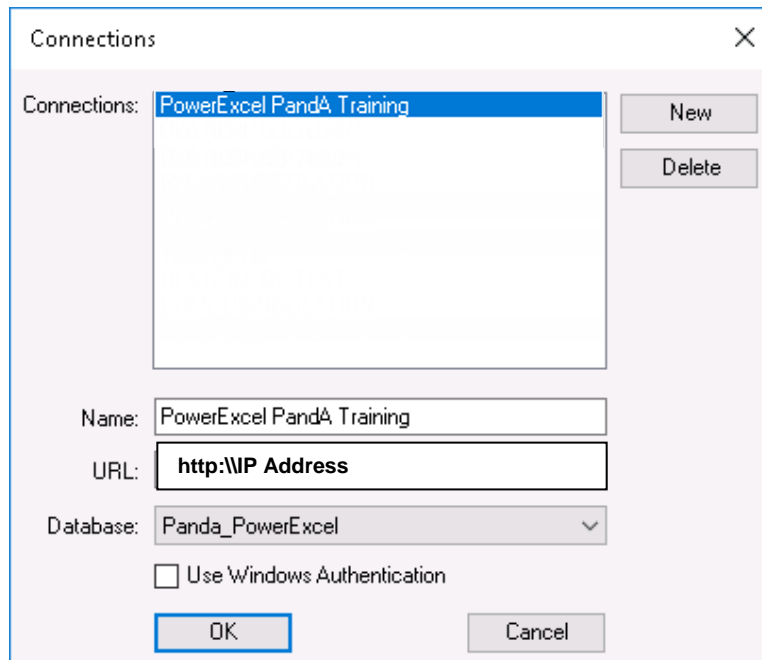
5. Click on **Connections** (circled in red above).
 - Click **New** (red arrow below)



- In the **Name** field, enter the **<name of the PowerExcel connection>**.
Note: You can provide any name for the connection; as an example, we have used **PowerExcel Panda Training** as the connection name (see next image).
- In the **URL** field, enter the **<correct URL>**. This will be the URL of the Server where the source PowerExcel database is currently running/opened.

Important: Typically, you will be entering an **http://IP Address** to reach a Cloud-based Server provided by PARIS Technologies.

- Click on the **Database drop-down** and select the correct source PowerExcel database; in this example, a sample database, **Panda_PowerExcel**, is selected as the source (shown in the next image).



- Click **OK**. The PowerExcel connection is now successfully created.

Please Note: from this point forward—and in order to get started with use of PowerExcel Slices—please reference the PowerExcel User Manual, beginning with **Section 2.2 – Creating a PowerExcel Slice**.